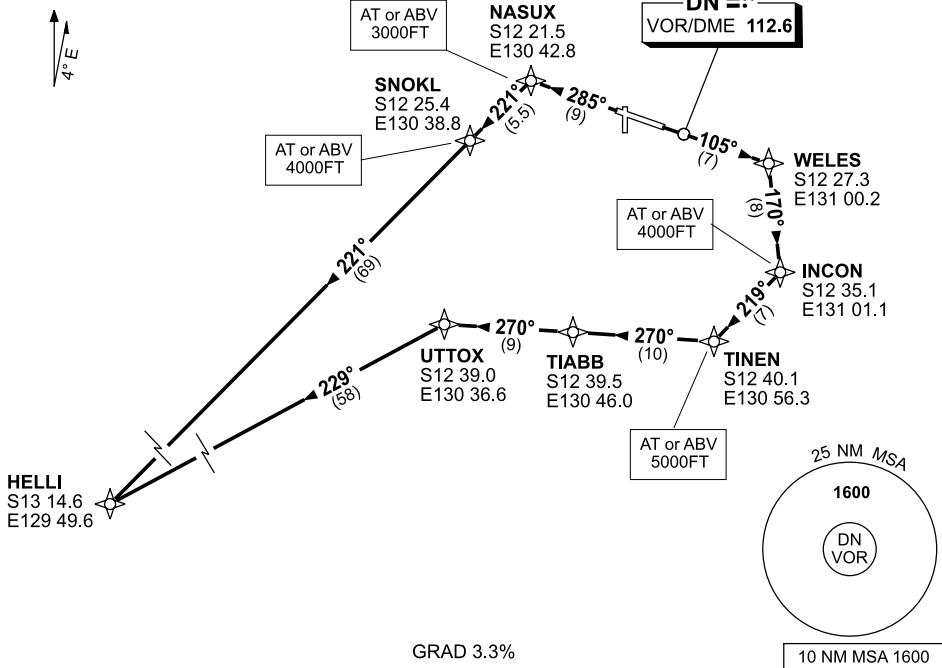


**STANDARD INSTRUMENT DEPARTURES (SID)
HELLI ONE DEPARTURE (JET) (RNAV)
DARWIN, NT (YPDN)**

15 MAR 2007

ATIS 112.6 308 344	ACD 126.8	SMC 121.8	TWR 133.1	APP-E 125.2 APP-W 134.1	Bearings are Magnetic Elevations in FEET AMSL
------------------------------	---------------------	---------------------	---------------------	--	--

NOT TO SCALE



HELLI ONE DEPARTURE

RWY 11

- Track 105° to WELES
- Turn RIGHT track 170° to INCON
Cross INCON AT or ABV 4000FT
- Turn RIGHT track 219° to TINOX
Cross TINOX AT or ABV 5000FT
- Turn RIGHT track 270° to TIABB
- Track 270° to UTTOX
- Turn LEFT track 229° to HELLI,
thence as cleared

RWY 29

- Track 285° to NASUX
Cross NASUX AT or ABV 3000FT
- Turn LEFT track 221° to SNOKL
Cross SNOKL AT or ABV 4000FT
- Track 221° to HELLI,
thence as cleared